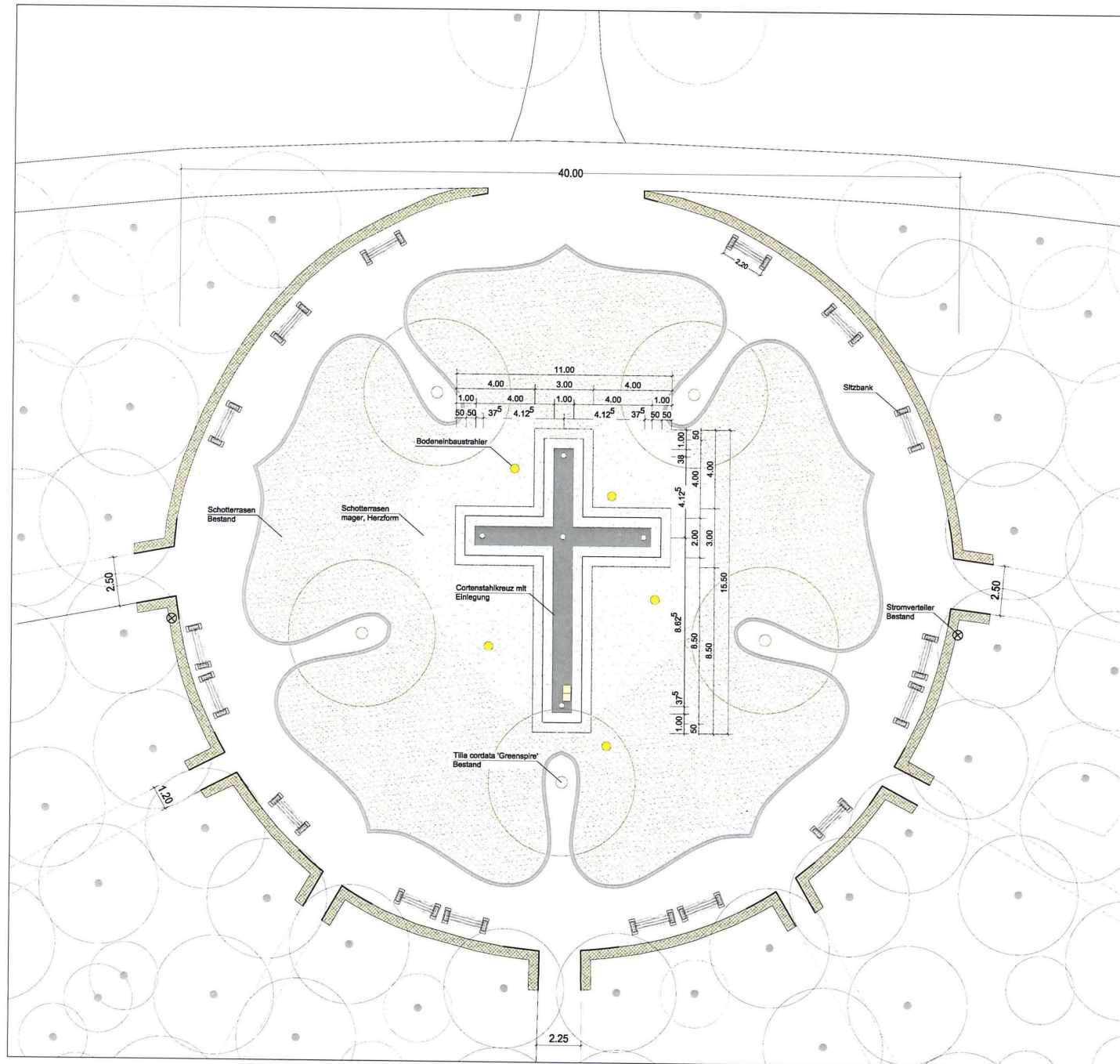




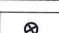
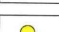


# "Himmelskreuz im Luthergarten"

Entwurf:  
Thomas Schönauer  
in Kooperation mit  
Andreas Kipar

Konkretisierung:  
Bernhard Bramlage  
Architekten BDA,  
Düsseldorf  
September 2014



-  Baum Bestand - Pflanzung 2009 - 2013
-  Ligusterhecke Bestand
-  Schotterrasen - Bestand
-  Schotterrasen, mager - Herzform
-  Stromverteiler Bestand
-  Bodeneinbaustrahler

